

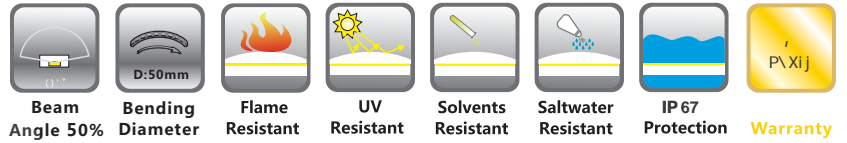
Specification

For LED Crystal Neon-Flex LP2010

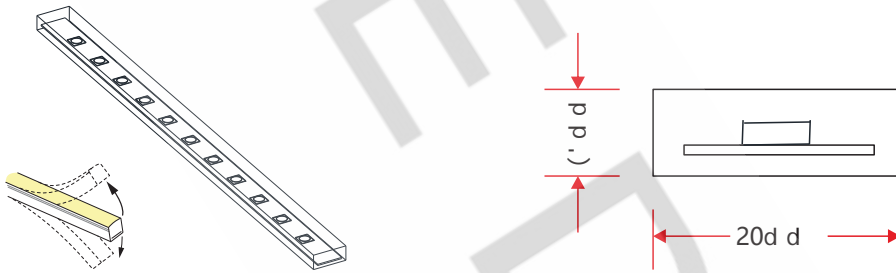
LP-F2010B



1. Specifications & Parameters



1.1 Dimensions of Light



Note: Unless otherwise specified, the tolerance of the dimensions is $\pm 0.1\%$

1.2 Technical Parameters

Model	LP-20109SD48: C
Material	PC
Length	48M
Width	3N
Color	48C: j
Color Temperature	20.83d d
Beam Angle	12C: j Z(l e'kz
Beam Diameter	250d d Z(l e'kz
Beam Length	125m
Package Length	≤62.5m
Material	285^
Material	u-
Ambient Material	u5,
Ambient Material	-40u, 0
Material	67

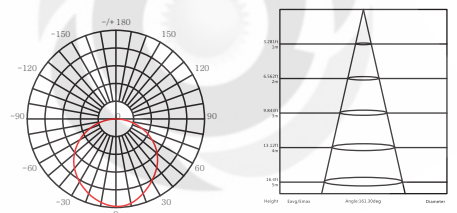


Silicone-Transparent

1.3 Optical Parameters

Photometric Data		
Model	LP-20109SD48: C	
Color	JD ;	
Beam Angle 50%	(2' ,	
Material	: : K	Q d \e&d
Material	3029..283B	5260d

Candle power distribution Illuminance Characteristics

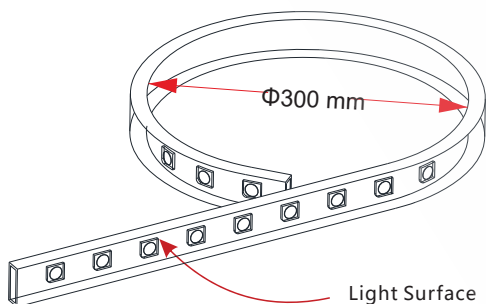


2. Functions & Features

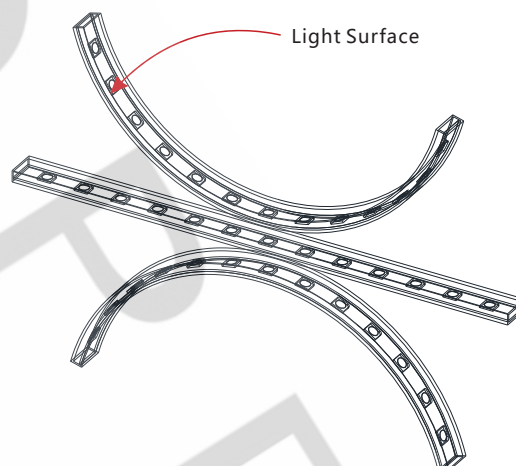
2.1 Product Features

1. High quality and high brightness SMD LED chip.
2. Protection Circuit.
3. Variety of monochromatic lights for option including White light.
4. UV & flame resistant construction(silicone).
5. Flat profile, good choice for recessed mounting.
6. High color consistency& uniformity.
7. Ultra flexible with 300mm minimum bending diameter.
8. Easy installation and assembly with DIY accessories for joining and terminating.
9. High IP rating.
10. The product IP rate is ultimately in line with properly applied IP rated connectors.
11. Continuous length up to 125m by powering one end.
12. Environmentally friendly & energy efficient.
13. Automated production, high reliability & long warranty.
14. 5 years life span.

2.2 Minimum Bend Diameter



The light can only be bent along the light surface.



Do not bend smaller than allowed minimum bend diameter.

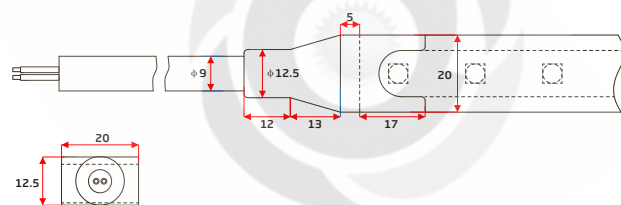
3. Types of Connector

3.1 Injection-moulded Connector

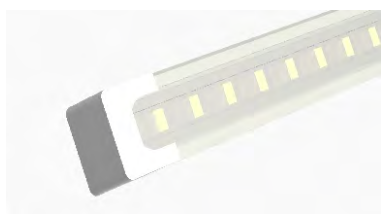


Injection-moulded Front Connector(top end)

Connects light to power supply with pre-installed front feed cable, IP69. Cable length available in 1m.

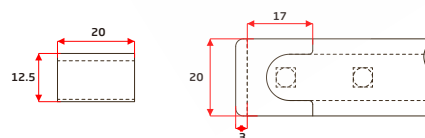


mm



Injection-moulded End Cap

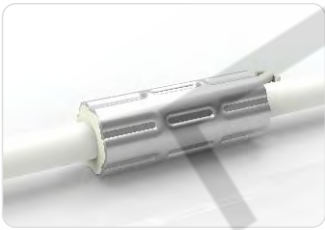
Pre-installed termination protection of the light, IP69.



mm

3.2 Anti-wicking Ferrule

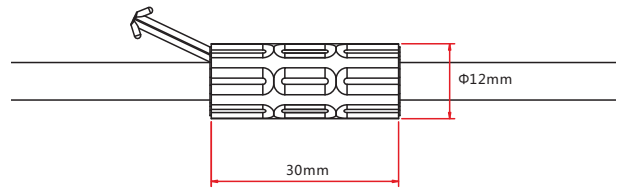
Note: Unless otherwise stated, the tolerance is $\pm 0.5\text{mm}$.



Anti-wicking Ferrule

The anti-wicking ferrule is located at 115mm ($\pm 5\text{mm}$ tolerance) from the connector on the cable.

For protection against water ingress from inside of cable wire and hence damage the light.



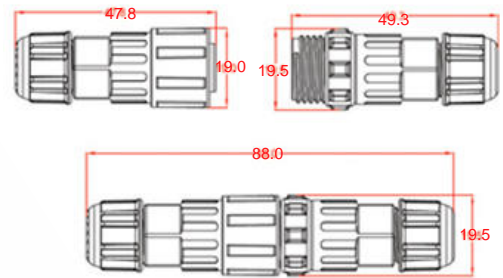
3.3 Male & Female Connector

Note: Unless otherwise stated, the tolerance is $\pm 2\text{mm}$.

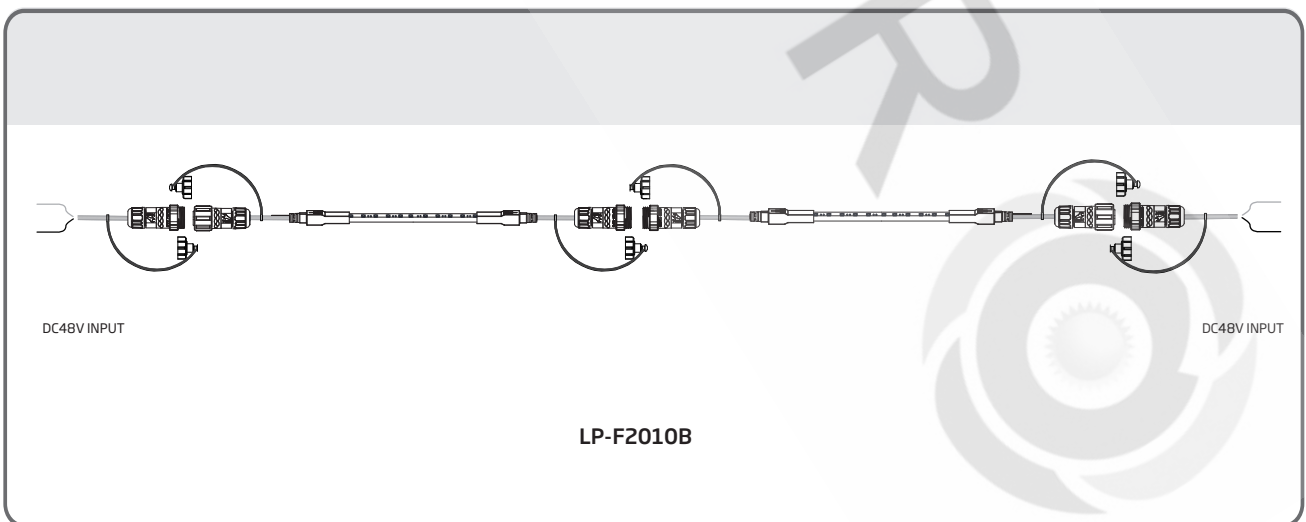


Male & female Connector

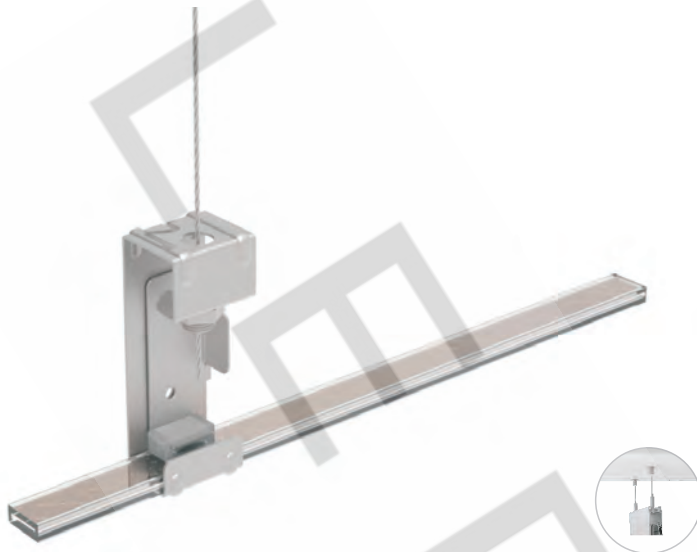
For plug and play cable junction, DIY or Pre-installed connector, IP69.



3.4 Wiring Diagram



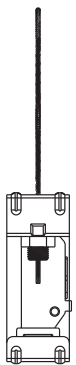
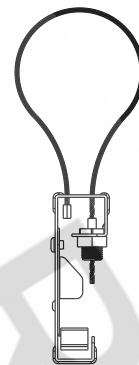
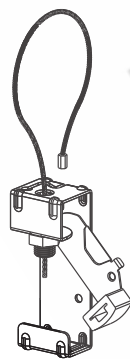
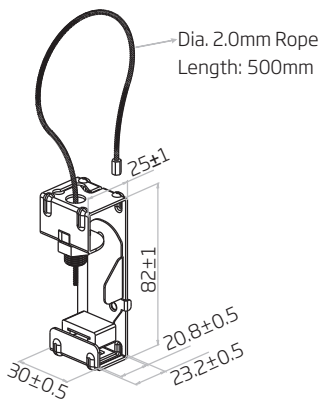
4. Suspension Kit



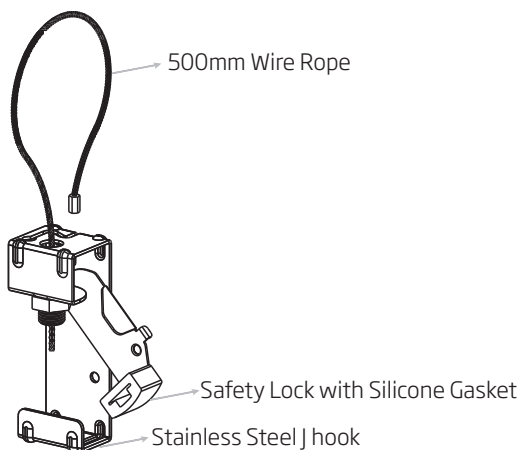
It's a simple but useful device for facilitating the suspension installation, portable and reusable, and the design of no screws enables the ease of assembly and disassembly on site. The hanging won't be subject to the shape, the size of the support, and its height is adjustable. Smartly locked with the hook, the wire rope is hard to fall off. In addition, it is rust-resistant, adopted 316 stainless steel, which makes it perfect for wet and vibration environments, such as mining tunnels, bridges, etc.



4.1 Dimension: mm



4.2 Main Components



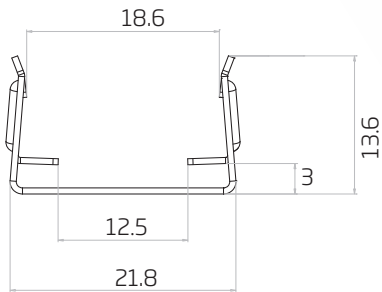
Item Code: LPF2010-S/KT

5. Stainless Steel Profile

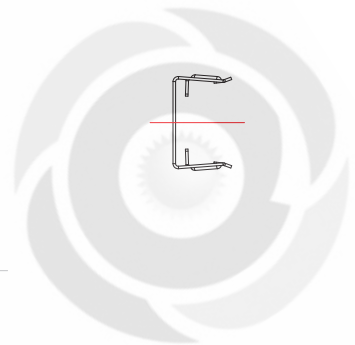
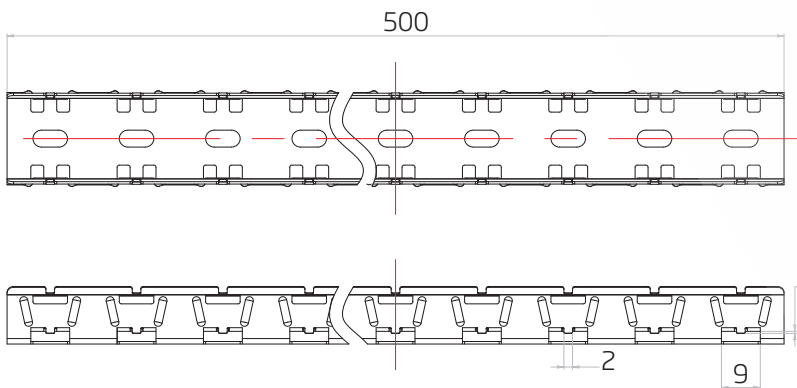
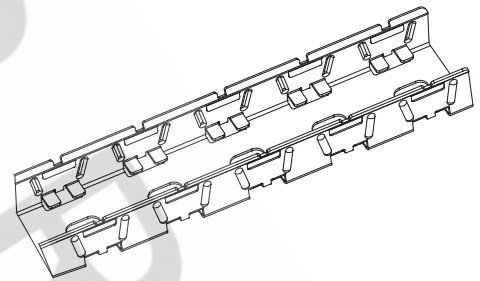
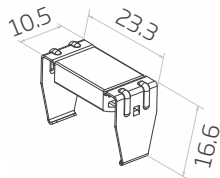


It's engineered for the safe and quick installation of LPF2010 Explosion Proof LED Strip. The design is smart enough to fix LED strip tightly, preventing it from falling off the mounting profile when vibration occurs. Accessories are available on demand for either screw mounting or strap mounting based on the site condition. The main structure, made of 316L stainless steel, makes it resistant to corrosion, suitable for environments where hazardous gas or dust exists and industrial workplaces.

5.1 Dimension: mm



Tolerance: $\pm 0.2\text{mm}$



Item Code	Standard Length	Slotted Hole
LPF2010-S/PL-500MM-SSL	500mm/19.68in	4*10mm/0.16*0.39in