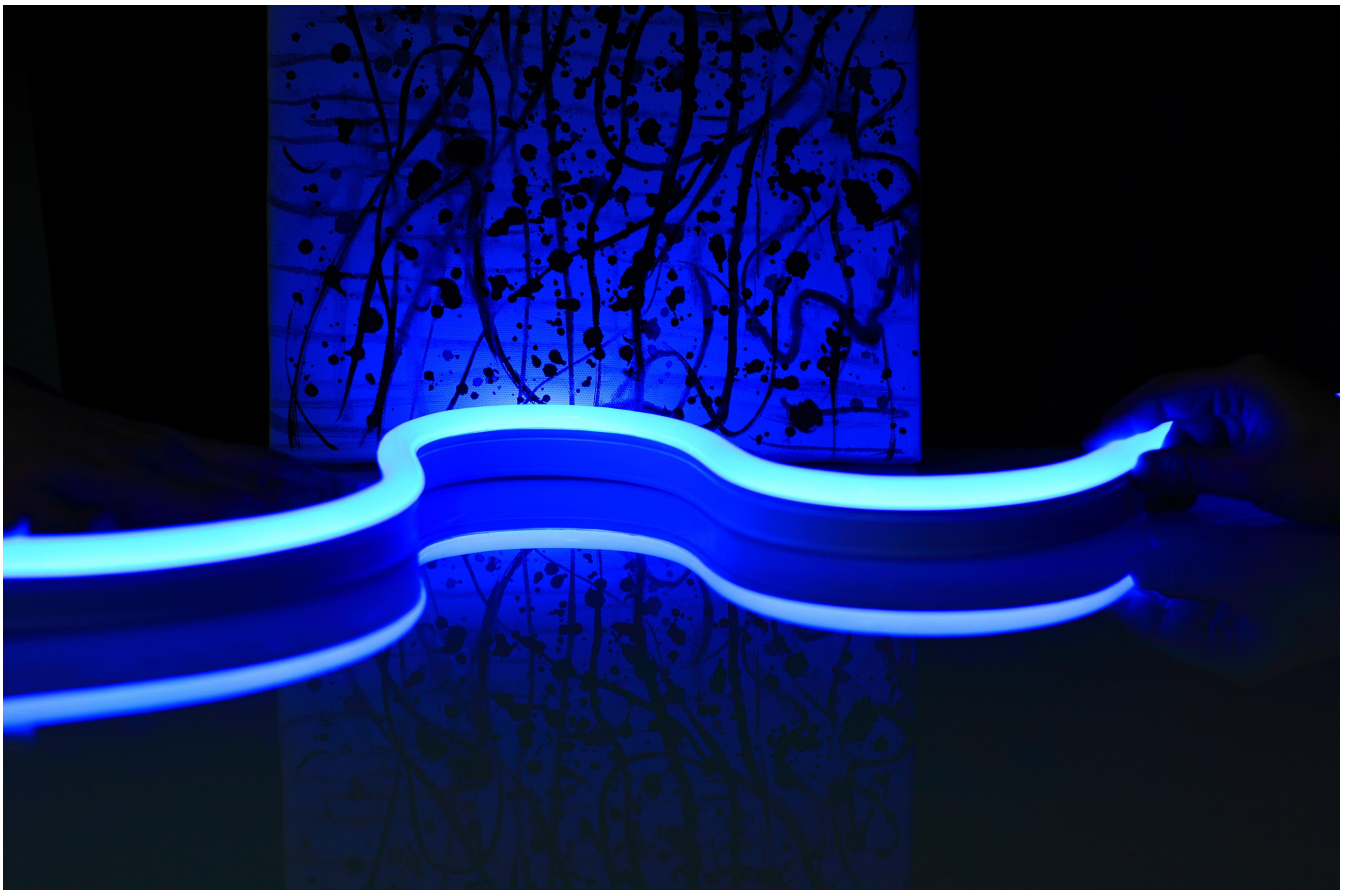


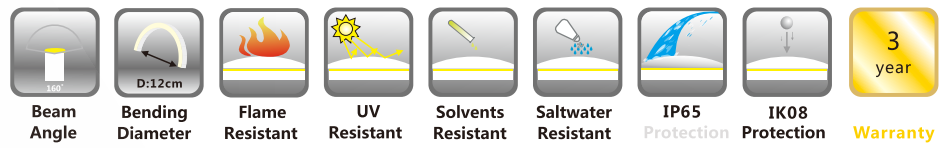
# Specification

For LED Neon Flex Ribbon

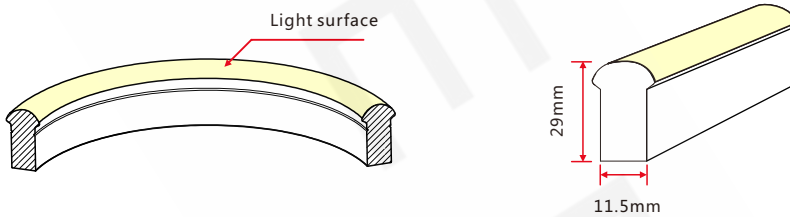
LED Neon-Flex Series-3 230V Dome



## 1. Specifications & Parameters



### 1.1 Dimensions of Light



Note: Unless otherwise stated, the tolerance of the light is  $\pm 0.2\text{mm}$ .

### 1.2 Technical Parameters

#### Technical Parameters

Article No.	LED Neon-Flex series-3 230V
Color	Red/Amber/Warm White/White/Green/Blue
Working Voltage	AC 230V
Rated Power/mtr	12W
LED Qty/mtr	72LEDs
LED Distance	13.89mm
Min. Cutting Unit	72LEDs(1unit)
Min. Cutting Length	1M(1unit)
Continuous Length	50M
Weight/m	490g
Storing Temp.	-20~60°C
Working Temp.	-20~45°C
Operating Temp.	0~45°C
IP Rating	IP65

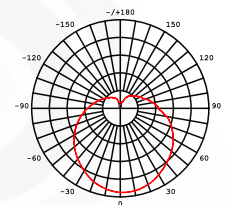


### 1.3 Optical Parameters

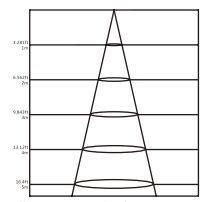
#### Photometric Data

Article No.	LED Neon-Flex series-3 230V				
LED Type	SMD				
Beam angle	160°				
Color	Wavelength	Lumen/m	Color	CCT	Lumen/m
Red	620-630nm	>120lm	2100K	2100±125K	>220lm
Green	520-530nm	>150lm	2400K	2400±125K	>220lm
Blue	465-475nm	>26lm	2700K	2725±145K	>260lm
Amber	585-595nm	>120lm	3000K	3045±175K	>260lm
			3500K	3465±245K	>260lm
			4000K	3985±275K	>260lm
			4500K	4503±243K	>260lm
			5000K	5028±283K	>260lm
			5700K	5660±355K	>260lm

#### Candle Power Distribution



#### Illuminance Characteristics

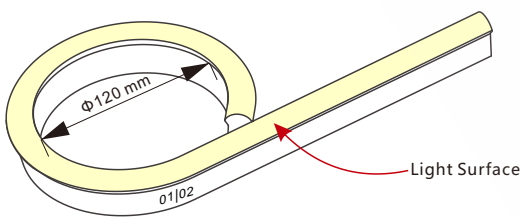


## 2. Functions & Features

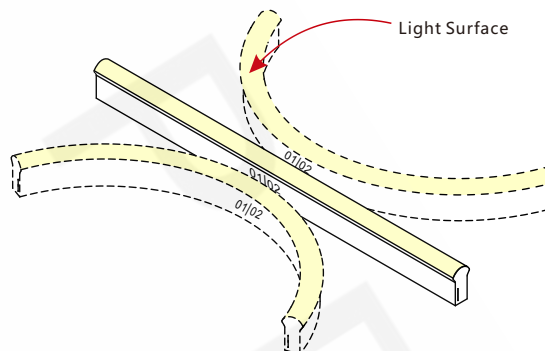
### 2.1 Product Features

1. High quality and high brightness SMD LED chip.
2. Protection Circuit: Each Two LEDs Protected.
3. Variety of monochromatic lights for option including Red, Green, Blue, Amber and White light(2100K to 5700K).
4. UV & flame resistant construction(PVC).
5. Domed profile for large viewing angle(270°).
6. High color consistency&smooth illumination with no light dots.
7. Flexible with 120mm minimum bending diameter.
8. High IP rating(IP65).
9. Continuous length up to 50m by powering one end.
10. Environmentally friendly & energy efficient.
11. Automated production, high reliability & long warranty.
12. 5 years life span (Do not continuously operate over 8 hours per day).

### 2.2 Minimum Bend Diameter

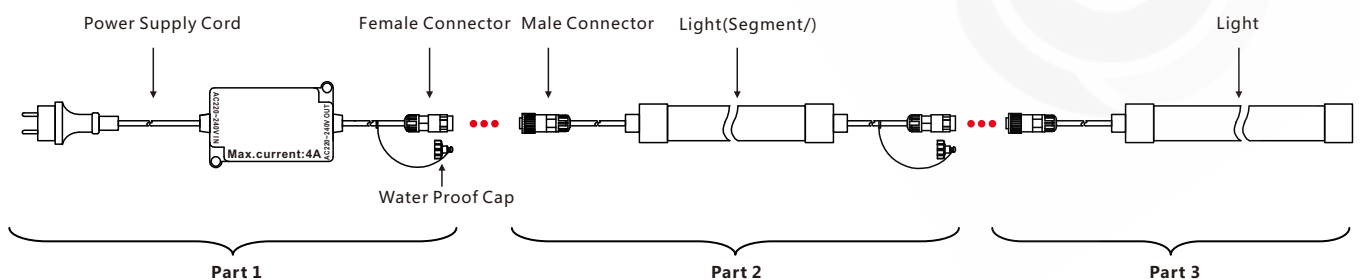


The light can only be bent laterally (opposite bend along to light surface).



Do not bend smaller than allowed minimum bend diameter.

## 3. Types of Connector



## Part 1



### Power line

1. Power line with the fuse box and the waterproof female connector (female connector is for the junction with the input end of the light), fuse box is with short circuit protection. Waterproof connector is IP65.
2. The standard for the power line can be changed to meet different requirement of different regions.

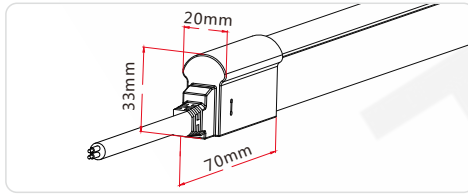
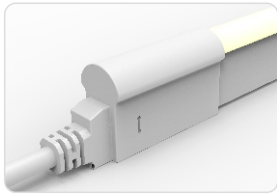
## Part 2



### Extension

1. With injection-moulded connectors on both ends, it can be used for light extension.
2. One end installed with male connector and another end installed with female connector.

Injection-moulded Front Connector (top end)



Female Connector



Male Connector



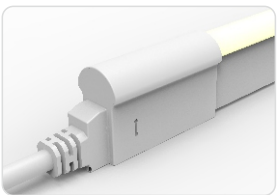
## Part 3



### Power connector & terminal

1. Power from one end with injection-moulded sealed front connector and end cap.
2. Waterproof male connector pre-installed on the cable at the position of around 0.3m (0.5m, 1m, 3m etc. for option), very convenient to be connected to the power line, easy installation.

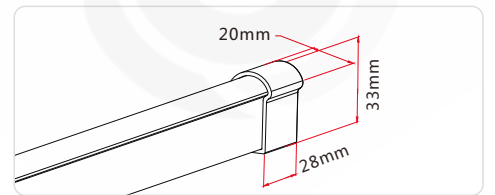
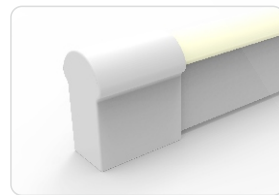
Injection-moulded Front Connector (top end)



Female Connector

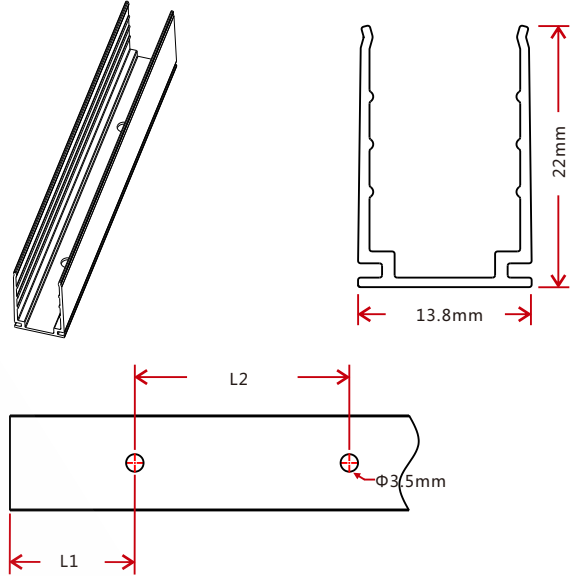
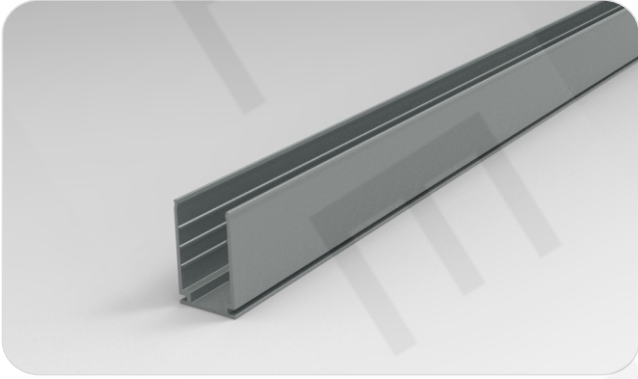


Injection-moulded End Cap



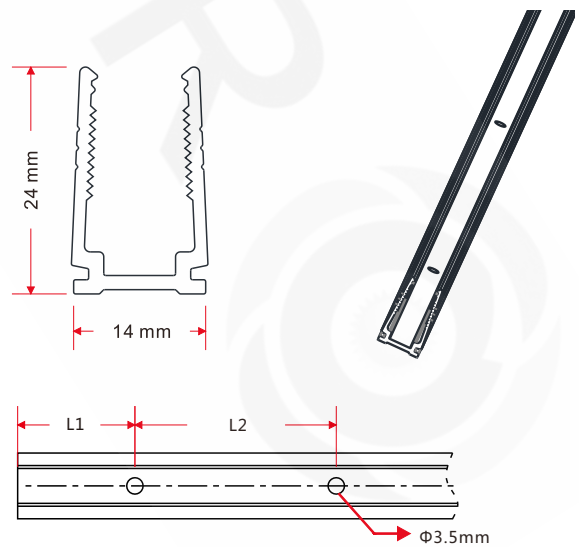
## 4. Mounting Profile

### 4.1 Standard Aluminum Profile



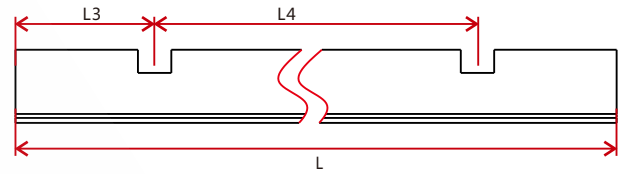
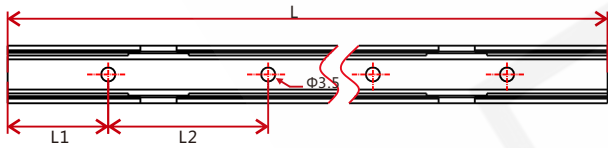
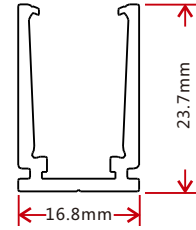
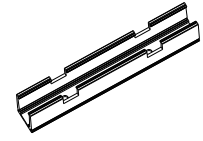
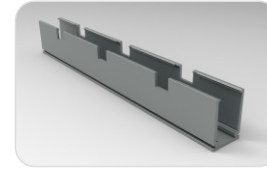
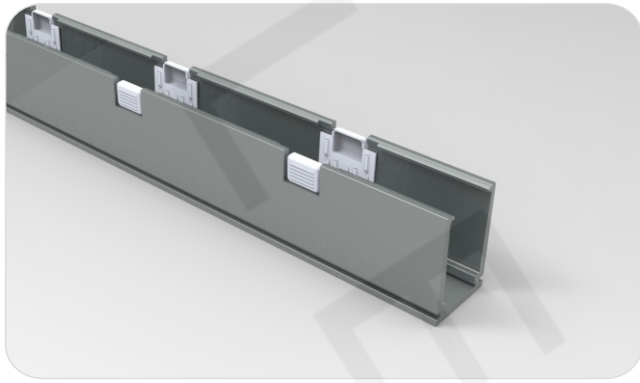
Model	W*H(mm)	Standard Length ( L:mm)	L1 (mm)	L2 (mm)	Screw Hole (Φ:mm)	Hole Number
K107	13.8*22	30	15	/	Φ3.5	1
		50	25	/	Φ3.5	1
		500	50	290	Φ3.5	3
		1000	100	200	Φ3.5	5
		2000	100	200	Φ3.5	10

### 4.2 Plastic Profile



Model	W*H(mm)	Standard Length ( L:mm)	L1 (mm)	L2 (mm)	Screw Hole (Φ:mm)	Hole Number
	14*24	300	50	200	Φ3.5	2
		500	50	200	Φ3.5	3
		1000	100	200	Φ3.5	5
		2000	100	200	Φ3.5	10

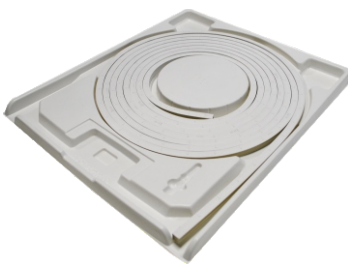
## 4.3 Self-locking Aluminum Profile (Using with the Clip)



Model	W*H(mm)	Standard Length(L : mm)	L1(mm)	L2(mm)	L3(mm)	L4(mm)	Hole Screw(Φmm)	Hole Number	Clip Number
16.8*23.7	35		17.5	/	17.5	/	Φ3.5	1	1
	50		25	/	25	/	Φ3.5	1	1
	500		100	300	150	200	Φ3.5	2	2
	1000		100	200	150	350	Φ3.5	5	3
	2000		100	200	125	350	Φ3.5	10	6

## 5. Packaging

### 5.1 White Box Packaging



Plastic Plate



White Box



Carton



### Packaging Detail

Light Length	White Box Dimension (cm)	Carton Dimension (cm)	Numbers of White Box	Carton Weight (kg)
5m	39*5.2*50	52*41*28	5	14
10m	51*5.2*62	64*53*28	5	26
10m	51*5.2*62	64*53*17.5	3	16
20m	68*5.2*79	81*70*12.5	2	22